

Motor parameters:

电机参数	类型Type	DC	伺服电机Servo motor	
	负载Load	kg	1500	3000
	电机品牌Motor brand	HKT-Robot		
	电机型号Motor type			
	驱动器型号Driver type			
	电机功率Motor power	W	750	1500
	电机电压Motor voltage	V	48	48
	电机转速Motor speed	Rpm	3000	3000
	电机电流Motor current	A	19	30
	额定扭矩Rated Torque	Nm	2.39	4
	防护等级Protection level	IP	65	65
	编码器Encoder	Magnetic encoder	Incremental	Incremental
	编码器Encoder	Resolution	2500	2500

Lifting parameters:

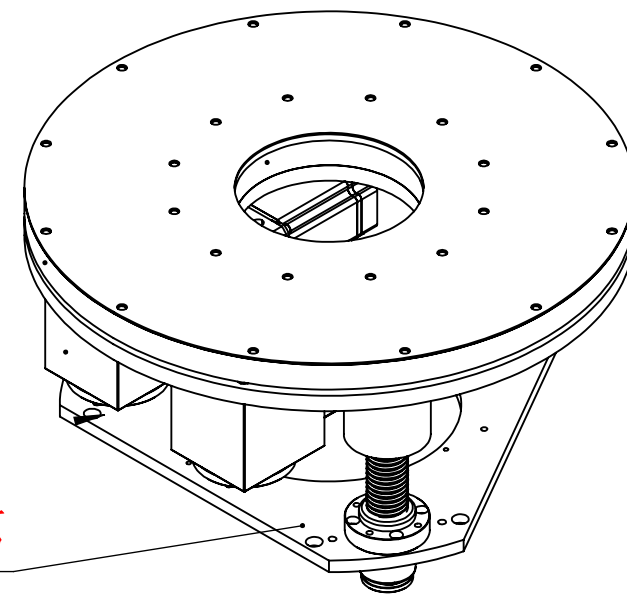
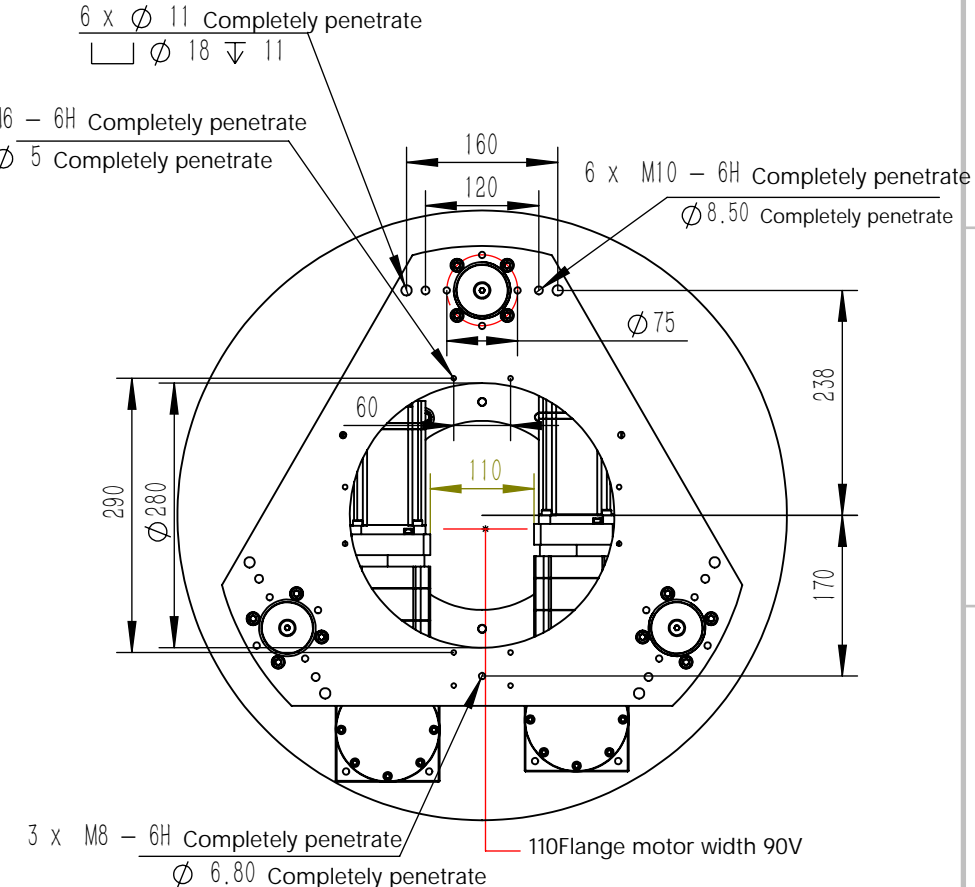
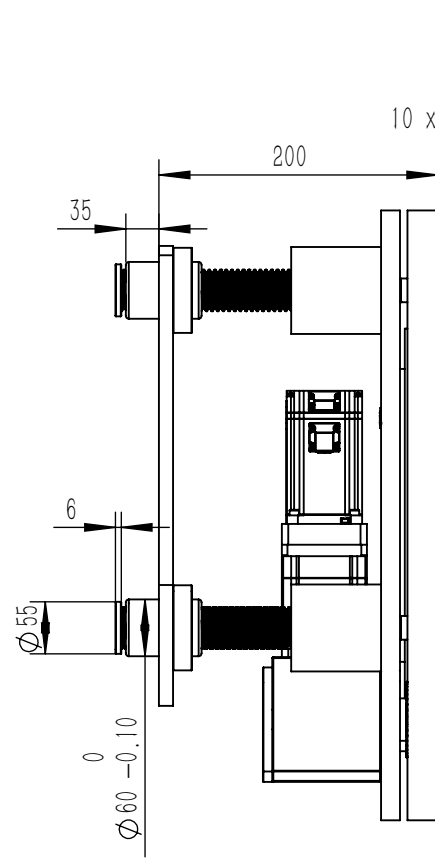
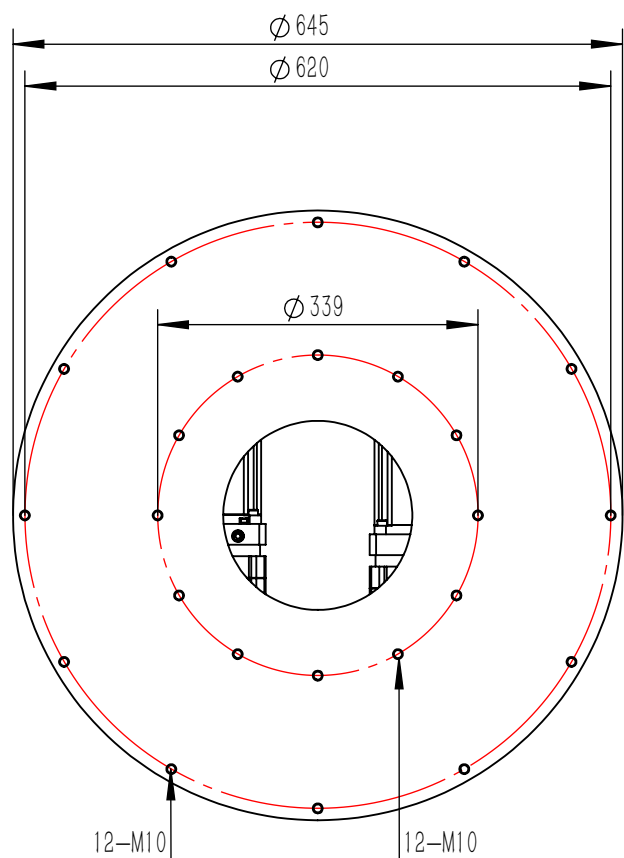
升降参数	类型Type	X	行星减速机Planetary reducer	
	行程Route	mm	90	90
	丝杆规格Screw rod specification	mm	T45x6	T45x6
	减速机速比Speed ratio of reducer	i	40	40
	传动齿比Gearratio	i	5.3	5.3
	升降速度Up and down speed	mm/s	7.5	7.5
	升降时间Up and down time	s	26.60	26.60
	限位传感器Limit Sensor	Bi duk	NPN low power is usually on	

Rotation parameters:


旋转参数	类型Type	X	行星减速机Planetary reducer	
	减速机速比Speed ratio of reducer	i	40	40
	传动齿比Gearratio	i	7.7	7.7
	旋转/SRotation per second	°	58.4	58.4
	旋转90°Rotation 90°	s	1.54	1.54
	旋转原点Origin of rotation	Bi duk	NPN low power is usually on	

Others:

其他	减速机润滑Reducer lubrication	Grease Lubrication	-20°~200°	
	自重Self weight	kg	150	
	应用次数Number of applications	More than 300,000 times		



车体端保证安装平面度及丝杆螺母同心度
 丝杆总行程100mm.有效行程90mm.调试务必保证上下各5mm安全距离
 Ensure installation flatness and concentricity of screw nut at the body end
 The total screw stroke is 100mm.
 The effective stroke is 90mm. During debugging, ensure a safety distance of 5mm up and down

1.5-3T Lifting and rotating mechanism		
Weight	Proportion	 HKT Robot 恒科通机器人
43.387	1:8	
Model:HKT-DSXZ-1.5-3T-90		
Shenzhen Hengketong Robot Co., Ltd.		